

# NPDES



# What is Illicit Discharge

- Anything that is not entirely made of stormwater that enters the stormwater system.

Exceptions: allowable, non-stormwater discharges, discharges pursuant to another NPDES permit, and discharges resulting from fire-fighting activities.

**REMEMBER ONLY RAIN DOWN THE DRAIN!**

# Types of Illicit Discharges

- **Continuous**
  - Occurs continuously to nearly continuously
  - Usually easier to detect
  - Typically greatest pollutant load
- **Intermittent**
  - Occurs over a shorter period of time (a few hours per day, few days per year)
  - Harder to detect
- **Transitory**
  - Occurs in response to singular event (spill, sewer break, transport accident, illegal dumping)
  - Hardest to identify during routine screening



# Types of Illicit Discharges

## Mode of Entry:

- **Direct**
  - Enter via piped connection
  - Usually continuous or intermittent
  - Sewer cross connections, straight pipe, industrial and commercial cross connections
- **Indirect**
  - Enter via storm drain inlets or by infiltration
  - Usually intermittent or transitory
  - Groundwater seepage, spills, dumping, outdoor washing, non-target irrigation



# Stormwater Pollutants

Activity	Pollutant
Vehicle washing/maintenance	<ul style="list-style-type: none"><li>• Heavy metals</li><li>• Oils and grease</li><li>• Surfactants/detergents</li><li>• Solvents</li></ul>
Pet Waste	<ul style="list-style-type: none"><li>• Bacteria</li></ul>
Lawn maintenance/landscaping	<ul style="list-style-type: none"><li>• Fertilizers and pesticides</li><li>• Nutrients</li></ul>
Failing septic systems / sewer cross connections / SSOs	<ul style="list-style-type: none"><li>• Bacteria</li></ul>
Illegal dumping / spills from vehicular accidents	<ul style="list-style-type: none"><li>• Oil and grease</li><li>• Toxics</li><li>• Nutrients (from lawn waste dumping)</li></ul>
Swimming pool draining	<ul style="list-style-type: none"><li>• Chlorine</li></ul>
Construction sites	<ul style="list-style-type: none"><li>• Sediment</li></ul>
Cleaning greasy equipment and grease traps	<ul style="list-style-type: none"><li>• Fats, oils, and grease</li></ul>

# Stormwater Pollutants

- Heavy metals
- Toxics
- Oil and grease
- Solvents
- Surfactants/  
detergents
- Nutrients
- Bacteria
- Sediment



# Examples of Illicit Discharges

- Chlorinated pool water
- Spills from car accidents
- Failing septic fields
- Dumped material
- Cross connections
- Track Out
- Sanitary sewer overflows
- Contaminated sump
- Floor drains



# Indicators of an Illicit Discharge

- Unusual flow
- Pungent odors
- Excessive or dead vegetation
- Excessive sediment
- Discoloration or oils sheen or stains
- Residual evidence (i.e. toilet paper)

# Allowable Non-Stormwater Discharges

- Water line flushing
- Landscape Irrigation
- Diverted stream flows
- Rising ground water
- Uncontaminated ground water infiltration
- Uncontaminated pumped groundwater
- Discharge from potable water sources
- Foundation drains
- Air conditioning condensation
- Irrigation water, springs
- Water from crawl space pumps
- Footing drains
- Lawn watering
- Individual resident car washing
- De-chlorinated swimming pool discharges
- Street wash waters
- Residential building wash waters without detergents

# What do you do?

- 1) Take a Picture
- 2) Report to Jennifer Aldridge
- 3) The Property Owner will be notified
- 4) The Property Owner will be given 2 weeks to respond & fix the violation.
- 5) If not in compliance than it will be turned over to Code Enforcement

# Stormwater Pollution Prevention



# Pollution Prevention/Erosion Control

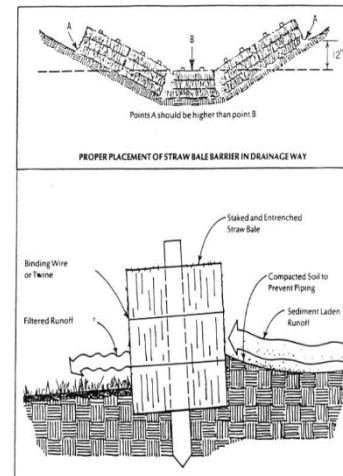
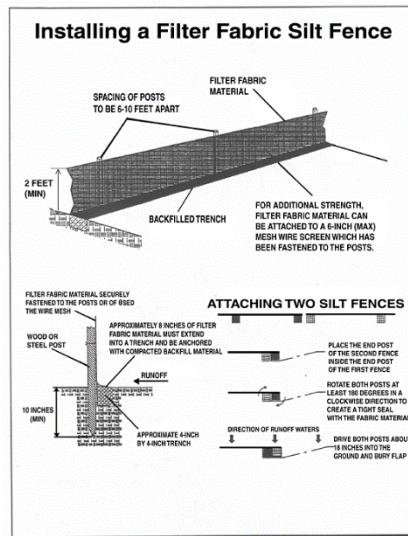
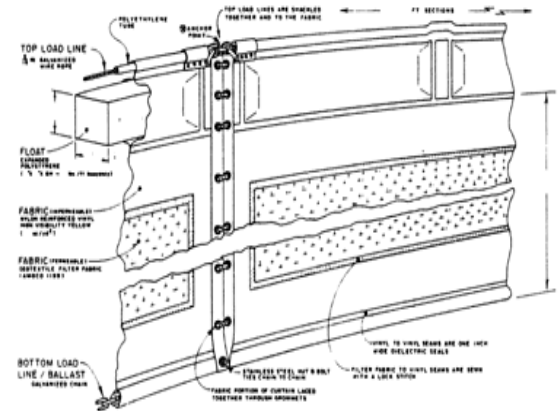
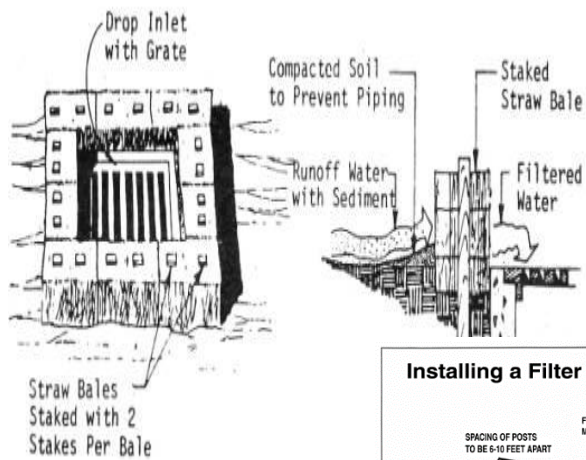
Tools to use:

- Inspections
- Good Housekeeping
- Closed containers
- Compatible chemicals
- Properly maintained equipment
- Silt Fences
- Hay Bales

# Erosion Control



# Details



# Violations



# What do you do?

- 1) Take a Picture
- 2) Report to Jennifer Aldridge
- 3) The Property Owner or contractor will be notified
- 4) The Property Owner or contractor will be given 2 weeks to respond & fix the violation.
- 5) If not in compliance than it will be turned over to Code Enforcement

# Questions

